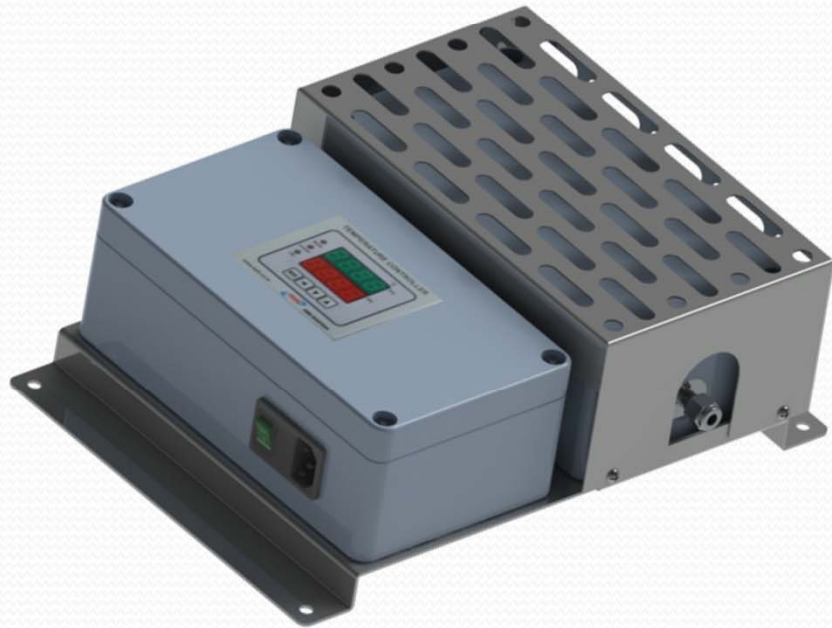


# WALL MOUNTING NO<sub>x</sub> CONVERTER



## 상세설명

- Gas inlet heated for hot gas conversion.
- High flow capacity, long operating time, high conversion efficiency.
- Catalyst cartridge easy to change.
- Operating temperature up to 399°C.
- Built in a Compact wall mounting.
- Safe handling and easy servicing.
- By-Pass solenoid valves.
- Power supply 110/220V 100W.

## 사양 및 주문번호

Model	A	Specification	Remark
		Voltage size	
SAHT-NCM-A	110	110VAC 100W	*Option -Heater Box
	220	220VAC 100W	

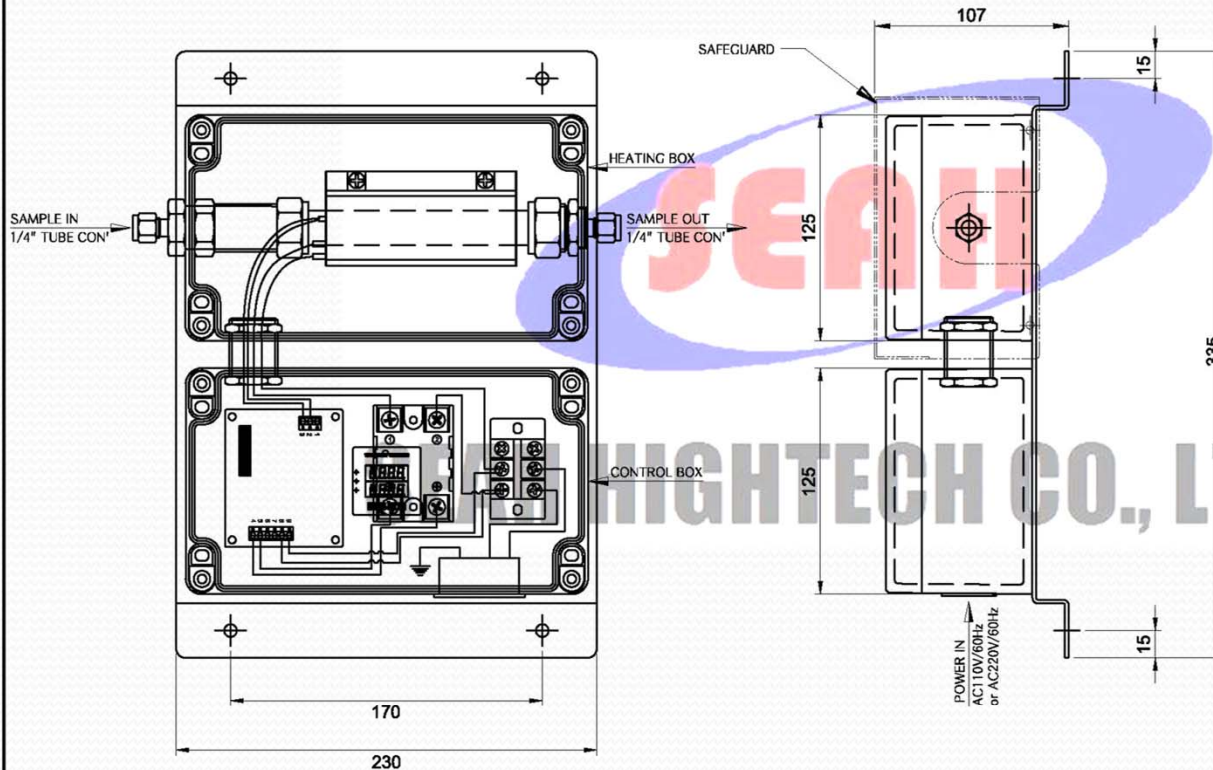
# NO<sub>x</sub> CONVERTER

## WALL MOUNTING TYPE

### SAHT - NCM - VOLTAGE

NO<sub>x</sub> CONVERTER  
WALL MOUNTING

VOLTAGE  
110 : 110VAC 100W  
220 : 220VAC 100W



TECHNICAL DATA	
Part number	SAHT-NCM-110 / 220
Housing version	Wall mounting type
Housing color front panel	RAL 7001 (silver grey)
Weight	Approx. 5kg
Gas inlet & outlet	Unheated
Gas inlet temperature	+399°C for standard molybdenum composition filling
Max. temperature	+550°C
Gas flow rate	Standard 60NI/h (max. 90NI/h)
Operating pressure	Max. 2bar abs.
Sample gas inlet	1/4" tube connection
Sample gas outlet	1/4" tube connection
Conversion rate NO <sub>2</sub> in NO	Effectiveness > 96% with a new catalyst
Life time of the catalyst	Approx. 6 months, depending on gas conditions
Relative air humidity	< 80%
Ambient temperature	+10°C to 50°C
Materials of gas wetted parts	Stainless Steel SS316, Aluminium, PVDF, PTFE, FPM, Viton

ELECTRICAL DATA	
Mains connection	Mains power plug connector incl. 2 fine fuse 5x20m (T3A/H230V), incl. 2m cable with plug. Alarm-and control signals via 9-pin Sub D-connector
Alarm contact	Free programmable contact 1NO/1NC, rating : 230V, 5A AC
Alarm set points	+/-10°C of set-point (others on request)
Protection class	IP54 DIN 40050 / EN 60204-1 / EN 57721
Power supply	230V/60Hz (Standard, others on request) : Appliance socket type
Power consumption	Approx. 100W

NOTE : Permission to proceed dose not constitute acceptance or approval of design data, calculations, analyses, test methods or materials developed or selected by the supplier and does not relieve supplier from full compliance with contractual obligations.

△	APPROVAL	Oct.10, 2011	J.S YOUN	K.Y SON	D.H PARK
REV.	DESCRIPTION	DATE	REV'D	CHECKED	APP'D

<b>SEAH HIGHTECH CO., LTD.</b> SEOUL, KOREA						TITLE <b>NO<sub>x</sub> CONVERTER</b>	
SCALE	NONE SCALE	DRAWN	DESIGN	CHECK	APPR.	DRAWING NO.	
PROJECTION	-	<i>KI-YOUNG SON</i>				VP-SAHT-NCM-110/220	
DATE	Oct.10,2011					REV.	