

KNOCKOUT POT



상세설명

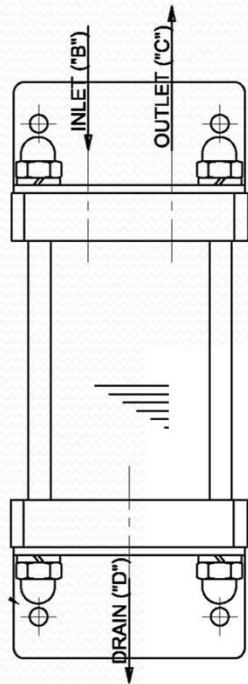
- Semi-permanent term of use
- Re-use of separated oil
- The surface of water in oily water separating tank is always clean
- Drain tube connection

사양 및 주문번호

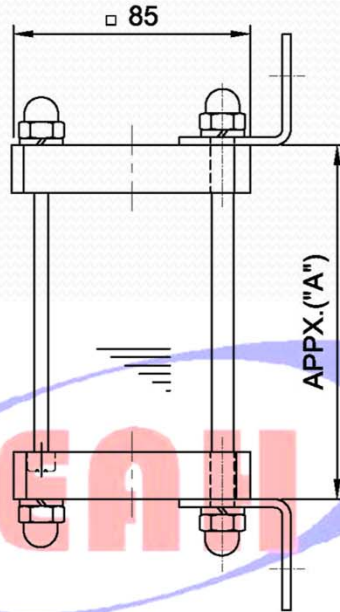
Model	A	Specification	B	Specification	Remark
		Glass Volume		Body Material	
SAHT-KP-A-B	12	120cc(DΦ70x50L)	H : Hastelloy-C M : Monel S : 316SS T : Teflon	<ul style="list-style-type: none"> • Option - Auto Drain - U-Packing - Glass Ball 	
	25	250cc(DΦ70x100L)			
	40	400cc(DΦ70x150L)			
	50	500cc(DΦ70x200L)			
	65	650cc(DΦ70x250L)			

- 주) 1) 기본적인 In/Out 전체 연결관 1/4" NPT(F)임
 2) 특수한 사양도 주문 생산합니다.

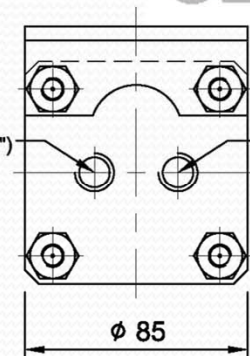
KNOCKOUT POT



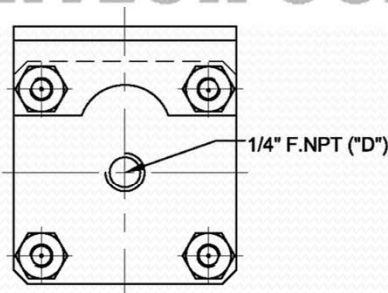
FRONT VIEW



SIDE VIEW



TOP VIEW



BOTTOM VIEW

SAHT - KP - VOLUME - MATERIAL

KNOCKOUT POT

GLASS VOLUME
 12: 120cc (DØ70 x 50L)
 25: 250cc (DØ70 x 100L)
 40: 400cc (DØ70 x 150L)
 50: 500cc (DØ70 x 200L)
 65: 650cc (DØ70 x 250L)

TUBE MATERIAL
 H : HASTELLOY®
 T : PTFE (TEFLON)®
 M : MONEL ALLOY®
 S : SS316

MODEL	DIMENSION "A"
SAHT-KP-12-S	77 mm
SAHT-KP-25-S	127 mm
SAHT-KP-40-S	177 mm
SAHT-KP-50-S	227 mm
SAHT-KP-65-S	277 mm

SEAH HIGHTECH CO., LTD.

- NOTE -
 · SCREW SIZE(B,C,D of Drawing) SPECIFICATIONS REFLECT POSSIBLE AFTER CONSULTATION.

△	APPROVAL	Feb.10, 2006	J.S YOUNG	K.Y SON	D.H PARK
REV.	DESCRIPTION	DATE	REV'D	CHECKED	APP'D
SEAH HIGHTECH CO.,LTD. SEOUL, KOREA			TITLE		
			KNOCKOUT POT		
SCALE	NONE SCALE	DRAWN	DESIGN	CHECK	APPR.
PROJECTION	-	KI-YOUNG SON			
DATE	Feb.10,2012	DRAWING NO.			REV.
			VP-SAHT-KP-1		△